

## Key elements of the 'Traffic Management Plan'



### Traffic Planning

An on-site logistics team, comprising a Logistics Manager and a Logistics Coordinator, has been appointed to manage and control all HGV traffic coming to and leaving the site. The logistics team will be the primary contact for the HGV drivers and the traffic marshals appointed to monitor traffic movement in the village.



### Online Booking System

An online booking system will be used for all trucks entering or leaving the site; the number of slots per hour will be limited. Cancellations or rescheduled time slots will be managed by the Logistics Manager. No vehicle will be permitted to enter or leave the site, or travel through the village, without an allocated time slot. Strict adherence to these conditions is mandatory.



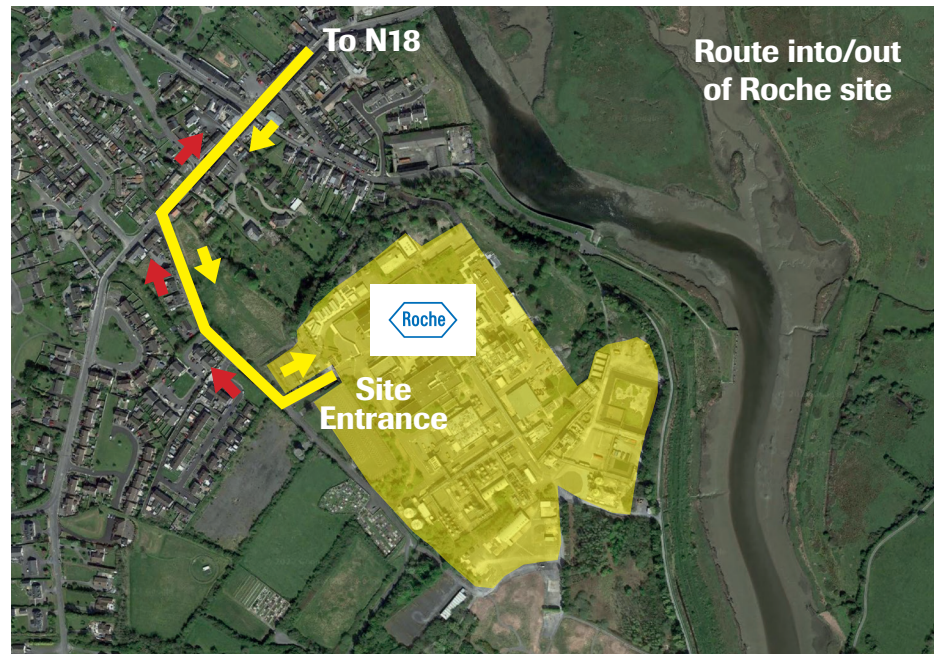
### Safety and Security

All containers leaving the site will be secured using twistlock systems. Tipper vehicles will have their loads covered. Flatbed trailers will have their loads secured using appropriate straps, webbing or chains as applicable. All drivers will carry out a walkaround and load security check prior to entering and exiting the site. All vehicles leaving the site will be inspected for cleanliness, and weighed using the on-site National Standards Authority of Ireland (NSAI) calibrated weighbridge to comply with the Road Traffic Act, Weights and Dimensions legislation.



### Vehicle Specifications

Over the lifetime of the project, the majority of HGVs will be transporting waste from the site. These HGVs will be less than 3 years old, meet low-emission standards and operate at reduced noise levels. All other HGVs will be monitored by the logistics team to ensure that the highest standards are maintained for HGVs accessing the site.



### HGV Drivers

HGV drivers are a critical factor in the overall 'Traffic Management Plan'. Before commencing work on the project, all drivers will receive induction on, and commit to, the standards required by Roche for the delivery of the project. They will receive instruction on the principles of driving through Clarecastle. A dedicated parking area, containing welfare facilities, a rest area, refreshments, and a place to eat, will be allocated to HGV drivers.



### Traffic Monitoring

All HGVs will be fitted with tracking devices so that the Logistics Coordinator can monitor and communicate in real time with the drivers to ensure that the targeted number of movements to and from the site is strictly adhered to.



### Traffic Marshals

Traffic marshals will be engaged to ensure that HGV movements through the village are carefully managed. They will focus on all aspects of safety and assist in the smooth flow of HGVs as they travel from the site to the R458 in both directions.